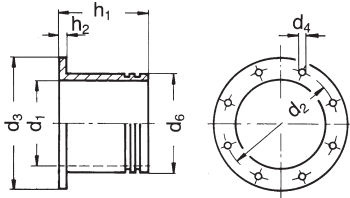




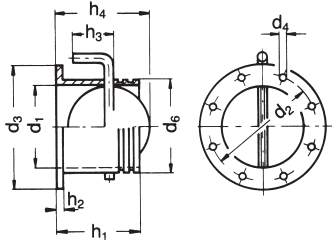
# ZUBEHÖR ACCESSORIES

## Saugstutzen ohne Flansch Intake connector without flange



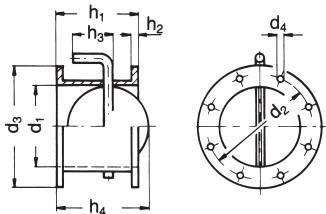
Typ Type	d <sub>1</sub>	d <sub>2</sub>	d <sub>3</sub>	d <sub>4</sub>	d <sub>6</sub>	h <sub>1</sub>	h <sub>2</sub>
HRD 1 T FU	70	118	145	4 x Ø 9,0	78	90	8
HRD 14 T FU	100	139	165	4 x Ø 9,5	110	100	8
HRD 16 T FU	125	165	191	4 x Ø 9,5	140	120	8
HRD 2 T FU	100	139	165	4 x Ø 9,5	110	100	8
HRD 60 FU	140	182	216	8 x Ø 11,5	150	140	8
HRD 65 FU	156	200	234	8 x Ø 11,5	170	160	8
HRD 7 FU	156	200	234	8 x Ø 11,5	170	160	8

## Saugstutzen ohne Flansch mit Drosselklappe Intake connector without flange with throttle valve



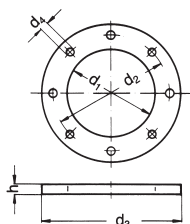
Typ Type	d <sub>1</sub>	d <sub>2</sub>	d <sub>3</sub>	d <sub>4</sub>	d <sub>6</sub>	h <sub>1</sub>	h <sub>2</sub>	h <sub>3</sub>	h <sub>4</sub>
HRD 1 T FU	70	118	145	4 x Ø 9,0	78	90	8	45	78
HRD 14 T FU	100	139	165	4 x Ø 9,5	110	100	8	60	108
HRD 16 T FU	125	165	191	4 x Ø 9,5	140	120	8	70	126,5
HRD 2 T FU	100	139	165	4 x Ø 9,5	110	100	8	60	108
HRD 60 FU	140	182	216	8 x Ø 11,5	150	140	8	75	142
HRD 65 FU	156	200	234	8 x Ø 11,5	170	160	8	85	163
HRD 7 FU	156	200	234	8 x Ø 11,5	170	160	8	85	163

## Saugstutzen mit Flansch und Drosselklappe Intake connector with flange and throttle valve



Typ Type	d <sub>1</sub>	d <sub>2</sub>	d <sub>3</sub>	d <sub>4</sub>	h <sub>1</sub>	h <sub>2</sub>	h <sub>3</sub>	h <sub>4</sub>
HRD 1 T FU	74	118	145	4 x Ø 9,0	80	8	45	78
HRD 14 T FU	102	139	165	4 x Ø 9,5	100	8	60	108
HRD 16 T FU	125	165	191	4 x Ø 9,5	120	8	70	126,5
HRD 2 T FU	102	139	165	4 x Ø 9,5	100	8	60	108
HRD 60 FU	140	182	216	8 x Ø 11,5	140	8	75	142
HRD 65 FU	160	200	234	8 x Ø 11,5	140	8	85	163
HRD 7 FU	160	200	234	8 x Ø 11,5	140	8	85	163

## Schweißflansch für saugseitige Anschlußrohrleitung Welding flange for pipe connection on intake side

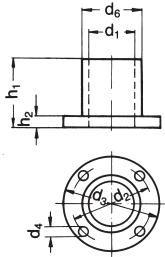


Typ Type	d <sub>1</sub>	d <sub>2</sub>	d <sub>3</sub>	d <sub>4</sub>	h <sub>1</sub>
HRD 1 T FU	75	118	145	4 x Ø 9,5	6
HRD 14 T FU	105	139	165	4 x Ø 9,5	6
HRD 16 T FU	131	165	191	4 x Ø 9,5	6
HRD 2 T FU	105	139	165	4 x Ø 9,5	6
HRD 60 FU	146	182	216	8 x Ø 11,5	6
HRD 65 FU	164	200	230	8 x Ø 9,5	6
HRD 7 FU	164	200	234	8 x Ø 11,5	6

Hinweis: Schweißflansche für ATEX-Ventilatoren nur aus Aluminium oder Edelstahl lieferbar.  
Please note: Welding flanges for ATEX-blowers made of aluminium or stainless steel only.

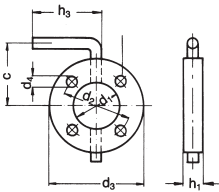


## Druckanschluss für Schlauchanschluß *Discharge connector for tube connection*



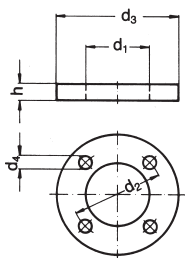
Typ Type	d <sub>1</sub>	d <sub>2</sub>	d <sub>3</sub>	d <sub>4</sub>	d <sub>6</sub>	h <sub>1</sub>	h <sub>2</sub>
HRD 1 T FU	65	95	115	4 x Ø 10	75	45	6
HRD 14 T FU	100	135	160	4 x Ø 11	110	66	6
HRD 16 T FU HRD 2 T FU	100	139	165	4 x Ø 9,5	110	100	8
HRD 60 FU	100	139	165	4 x Ø 9,5	110	100	8
HRD 65 FU	140	182	210	8 x Ø 11,5	150	100	12
HRD 7 FU	156	200	234	8 x Ø 11,5	170	160	8

## Drosselklappe wird am Druckstutzen des Ventilators montiert *Throttle valve for fitting on the blower discharge flange*



Typ Type	c	d <sub>1</sub>	d <sub>2</sub>	d <sub>3</sub>	d <sub>4</sub>	h <sub>1</sub>	h <sub>3</sub>
HRD 1 T FU	82,5	65	95	115	4 x Ø 9	23	100
HRD 14 T FU	100	100	135	160	4 x Ø 11	23	100
HRD 16 T FU HRD 2 T FU	107,5	100	139	165	4 x Ø 9	23	100
HRD 60 FU	107,5	100	139	165	4 x Ø 9	23	100
HRD 65 FU	130	140	182	210	8 x Ø 11	23	100
HRD 7 FU	142	160	200	234	8 x Ø 11	23	100

## Schweißflansch für druckseitige Anschluß- rohrleitung *Welding flange for pipe connection on discharge side*



Typ Type	d <sub>1</sub>	d <sub>2</sub>	d <sub>3</sub>	d <sub>4</sub>	h <sub>1</sub>
HRD 1 T FU	65	95	115	4 x Ø 10	6
HRD 14 T FU	100	135	160	4 x Ø 11	6
HRD 16 T FU HRD 2 T FU	105	139	165	4 x Ø 9,5	6
HRD 60 FU	105	139	165	4 x Ø 9,5	6
HRD 65 FU	146	182	210	8 x Ø 11,5	6
HRD 7 FU	164	200	234	8 x Ø 11,5	6

Hinweis: Schweißflansche für ATEX-Ventilatoren nur aus Aluminium oder Edelstahl lieferbar.  
Please note: Welding flanges for ATEX-blowers made of aluminium or stainless steel only.